

APPENDIX A: Photographic Log of the LWSC Dam Survey



Massachusetts Riverways Staff Gage located downstream from the LWSC Diversion Dam (seen in background) along the right bank of the Saugus River. Gage readings are collected once daily.

Date: 6/24/04

Flow at USGS Gage: 18 cfs



Flow passes through a 3" opening in the sluice gate (shown at left and again at right)

Date: 6/24/04

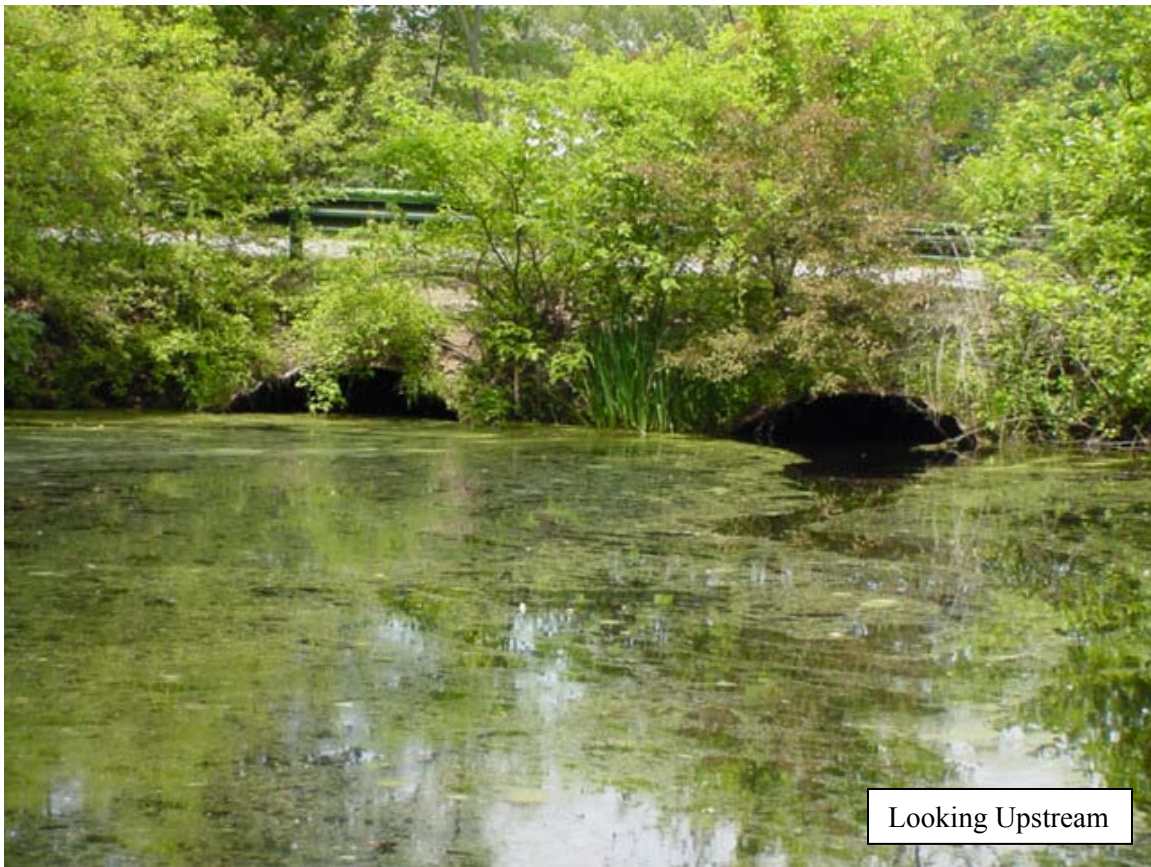
Flow at USGS Gage: 18 cfs



A local benchmark (nail, elevation 52.58 feet) is located in the top of the right training wall. The dam crest elevation is approximately 50.6 feet). “Measure-downs” to the headpond are taken from a notch approximately 2 inches below the top of the training wall. Headpond elevation is collected once daily.

Date: 6/24/04

Flow at USGS Gage: 18 cfs



The headpond extends upstream through a set of corrugated steel culverts (shown at center, above) that convey flow under a road connecting the hotel to the golf course and fitness club.

Date: 6/24/04

Flow at USGS Gage: 18 cfs



A pile of rocks (shown in the foreground, above) at the foot of the dam apron creates a backwater pool and forces the majority of flow through a winding thalweg (located at left). Another artificial rock pile may need to be constructed to maintain the necessary water level (minimum 8" deep) at the foot of the fishway.

Date: 6/24/04

Flow at USGS Gage: 18 cfs



The channel is along both banks: a parking lot (right bank, shown at right), and a putting green (left bank, shown at left).

Date: 6/24/04

Flow at USGS Gage: 18 cfs